



# We want our Partner Programme's lasting relationships, to last even longer.

---

The new Committed Carbon Reduction Partner accreditation shows your business is leading the way towards a better future.



---

# Helping you on the journey to Net Zero.

---

In an ever-changing business climate, having a clear commitment to sustainability is what makes you stand out – and demonstrates that you are different. That's why we have developed the **Committed Carbon Reduction Partner (CCRP)** accreditation for our Partner Programme members. It's a sign that shows a commitment towards sustainability and a better future for all.

Not only will this important new accreditation help to reduce the carbon footprint of our whole industry, it will also provide a competitive advantage for our Partners, and help them attract new customers who value sustainable practices. It's about helping you on the journey towards net zero – and being there with you at every step.







---

# Committed Carbon Reduction Partner (CCRP) accreditation.

Your commitment to sustainability.

---

The future is now. Sustainability and net zero are now a necessity, not an option. At Mitsubishi Electric, we want to support our Partners. That's why we've created the **Committed Carbon Reduction Partner (CCRP)** accreditation. Seeing change. Meeting it head on. Helping your business be ready for it – and reap the benefits it will bring.

Today, both public and private organisations alike are enquiring about sustainable credentials from both us and our Partners – for example, Government Procurement Policy Notes such as PPN 06/21. The new CCRP accreditation will help smooth that process for our Partners, and give them the support to pitch for these 'green' tenders with a real competitive advantage.

# Helping your business, helping the environment.

The benefits of CCRP for accredited Partners are wide ranging, helping to raise awareness of the importance of sustainability in our industry. Applying for accreditation will highlight that your business is forward-thinking and proactive in leading the way towards a better future for everyone.



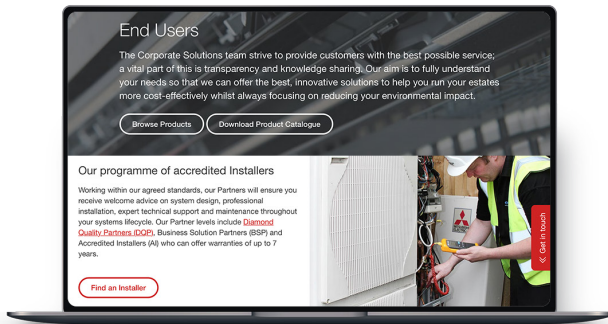
## The benefits of Committed Carbon Reduction Partner (CCRP) accreditation

- > Demonstrates that your business adopts sustainable practices in its operations
- > Positions you as leaders in our industry, with an established sustainable supply chain
- > Shows you have a proven commitment to environmental sustainability
- > Demonstrates that you are committed to an operational carbon footprint reduction plan (calculated annually)
- > Gives your business a competitive advantage, with proven, industry-recognised sustainability credentials.

## Supporting your business at every stage

We will support you through the CCRP accreditation process. And, to make things as clear and straightforward as possible, we're developing an online portal of assets, to enable Partners to meet the required criteria:

- > 'How to' guides
- > Videos
- > Webinars
- > And much more



## Helping people find your business

To help your business even more, we'll also give you an enhanced listing on the 'Find an Installer' tool on the Mitsubishi Electric LES website – allowing users to search on filters including sustainability credentials. Plus, to give prospective new customers even greater reassurance – as well as a reason to choose your business – your CCRP accreditation will appear on your company listing, along with your Partner tier details. Putting the environment first. Putting your business first too.

## Net Zero – the time to act is now

“The challenge, I'd say, to companies is to think strategically. I know it's really difficult sometimes when you're thinking week by week and what sort of projects are coming up. When it comes to giving that sense of what your company stands for, what are its values. That potentially creates new markets and new opportunities. Take a section of the market that is willing for the taking, you know regulations will follow. I think for those that think about this now – they are going to be the market leaders and the companies that are still going to be in business in 10 years' time.”

**Chris Skidmore OBE**, former Energy Minister and Chair of the UK Government's independent review of net zero. In answer to his opinion on what contractors should be doing now.

*Mission Zero – Step by Step podcast with Mitsubishi Electric and BESA.*

**However things play out, the opportunity for businesses driving the journey towards net zero are huge – so there has never been a better time to achieve your CCRP accreditation.**



---

# Net Zero. Now is the time.

---

We have all witnessed the reality of climate change in the world. Corporations are expected to make long-term, sustained efforts to solve this global environmental issue. At Mitsubishi Electric, we're committed not only to changing our own practices, but also to helping develop more sustainable operational change across the whole of our industry.







We develop products that help engineers, installers and end-users to meet the challenges of sustainability by reducing their carbon footprints and saving energy. Our ambition is a target of net zero greenhouse gas emissions in the entire value chain by 2050 and a reduction from factories and offices of 50% or more (compared to 2013) by 2030.

These are bold aims. But aims that are entirely necessary if we are to counteract the consequences of global warming – and help create a better future for generations to come.

As a global manufacturer, Mitsubishi Electric has a responsibility to reduce the negative impacts of our business on the environment. That's why we have set emissions reductions targets in line with the Science Based Targets Initiative (SBTi).

As committed Partners, we want to support you also, in your own commitments and contributions to the net zero goal. Helping you get formal recognition for your sustainability agenda. Helping us all in achieving our 2050 targets. The journey towards a greener, cleaner tomorrow starts today.

“

Our ambition is a target of net zero greenhouse gas emissions in the entire value chain by **2050** and a reduction from factories and offices of **50% or more** (compared to 2013) by 2030.

”



## So, how does a Partner apply?

Interested Partners should log in to the Partner Portal, where they can find the CCRP application form and guidance.

<https://les.mitsubishielectric.co.uk/customer-portal/ccrp>

You can also talk with your Account Manager or email the Partner Programme team for support at [Partner@meuk.mee.com](mailto:Partner@meuk.mee.com)

# The journey to achieving CCRP accreditation

Keys:

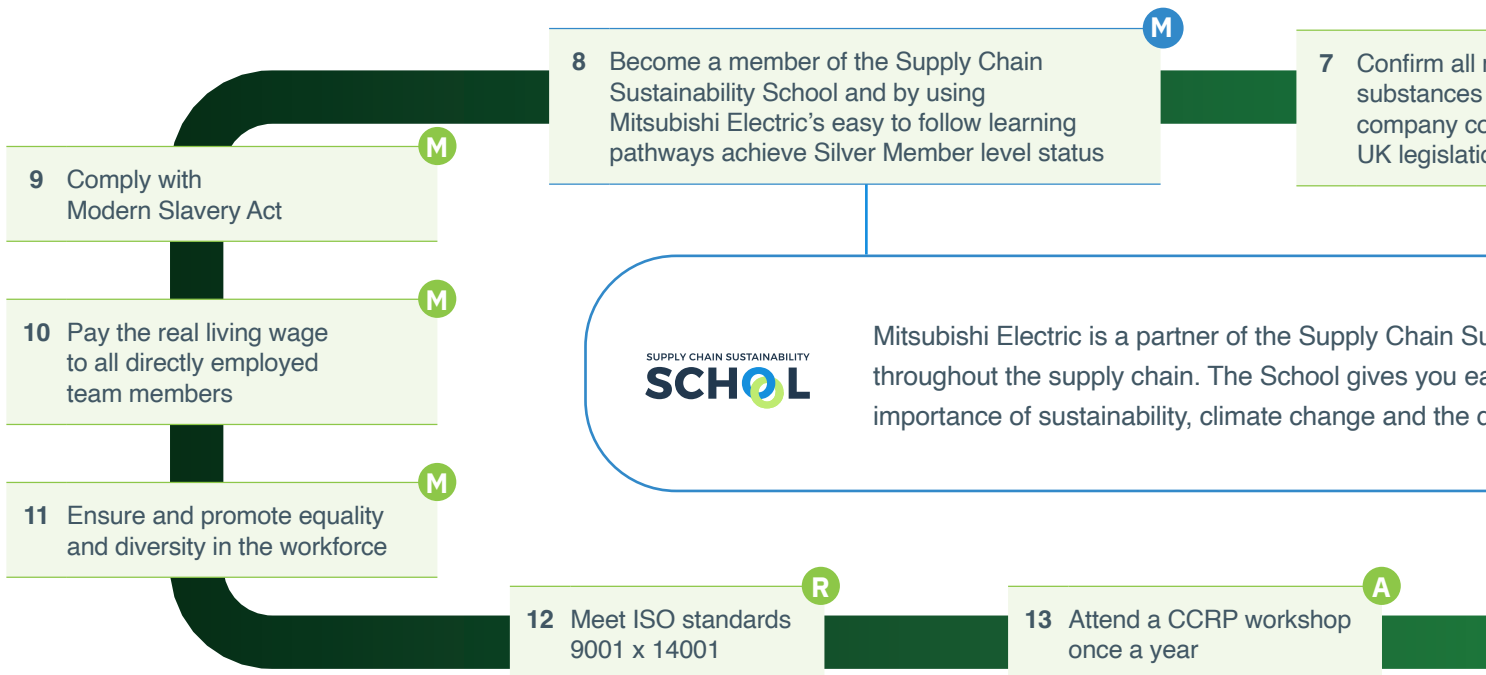
- M** Mandatory
- A** Mandatory Annually
- R** Recommended
- P** Preferred
- 2** By year 2 as CCRP
- - CCRP Accreditation
- - Climate Partner
- - Supply Chain Sustainability School



We know that embracing sustainability and achieving net zero is essential as you make this essential change. A 5-step carbon footprinting process will generate and set reduction targets to help you get down to business.

ClimatePartner is a leading solution provider for corporate carbon footprinting software that is unique on the market. They will help you to implement reductions. Additionally, should you wish, they can also help you to

- |  |  |                                      |
|--|--|--------------------------------------|
| <b>Step 1:</b>                                 | <b>Step 2:</b>                         | <b>Step 3:</b>                       |
| Identify carbon footprint of your organisation | Set reduction targets and measurements | Establish a carbon management system |





**1** Partners will be required to complete a carbon footprint calculation which is third party verified. We've made this easy for Partners wishing to use their RDF fund and have set up a relationship with a leading solutions provider for climate action, ClimatePartner, who will help you through the carbon audit. For more information, visit: <https://les.mitsubishielectric.co.uk/customer-portal/ccrp/ccrp-application-support>

**2** Once the carbon audit has been completed, we would encourage you to consider offsetting any remaining carbon emissions left after the reduction process. Again, ClimatePartner will provide projects for this offset, these include: nature based, social impact and green energy projects.

Net zero might feel a little overwhelming – that's why we're there to support you. A carbon footprint calculation via ClimatePartner will help you work out the emissions you need to reduce to reach net zero within an achievable and financially viable timeframe.

ClimatePartner is a leading provider of climate action: They combine individual consulting with a cloud-based platform, our Partners, to calculate their carbon footprint, to set reduction targets and to communicate their progress. They provide verified climate projects and transparent communication solutions.

### The 5-step process:

- Step 3:** Publish reduction measures
- Step 4:** Offset remaining carbon emissions
- Step 5:** Communicate 'transparently' by using ClimatePartner's logo and communications toolkit

**3** Establish and publish the strategy for ongoing carbon reduction

**4** Set a net zero pledge with key targets to be achieved by set dates – **31 Dec 2050**

Materials and services used by your company must comply with relevant regulations

**6** Establish a Sustainability Policy

**5** Publish your Environmental Policy

As a Sustainability School – committed to supporting the drive to sustainability – we make it easy to follow signposts and pathways to help you learn more about the net zero journey. Drive towards net zero. It's your easy to use one-stop-shop for all things net zero.

**17** By year 2 of membership of the Supply Chain Sustainability School, achieve Gold Membership status

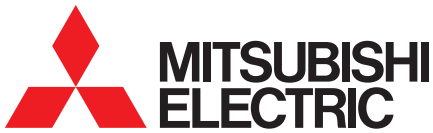
**14** Attend one of our Net Zero Roadshow events

**15** Work and engage with SME's and social enterprises



## So, how does a Partner apply?

Interested Partners should log in to their Partner Portal to apply and find more support: <https://les.mitsubishielectric.co.uk/customer-portal/ccrp/>



## Further information

For more information please take a look on the Mitsubishi Electric Partner Portal, where you'll find more details, advice and the application form: <https://les.mitsubishielectric.co.uk/customer-portal/ccrp/ccrp-application-support>

If you need more support please talk with your Mitsubishi Electric Account Manager or email our Partner Programme team at [Partner@meuk.mee.com](mailto:Partner@meuk.mee.com)

### Useful references

**Supply Chain Sustainability School Memberships**  
[www.supplychainschool.co.uk](http://www.supplychainschool.co.uk)

**Climate Partner**  
[www.climatepartner.com](http://www.climatepartner.com)

**Carbon Reduction Plan**  
[www.supplychainschool.co.uk/?s=carbon+reduction](http://www.supplychainschool.co.uk/?s=carbon+reduction)

**How to set a Science based target**  
[www.sciencebasedtargets.org/set-a-target](http://www.sciencebasedtargets.org/set-a-target)

**Examples of an Environmental Strategy**  
[www.supplychainschool.co.uk/?s=sustainability+policy](http://www.supplychainschool.co.uk/?s=sustainability+policy)

**Guidance on ensuring materials comply with UK legislation**  
[www.gov.uk/guidance/construction-products-regulation-in-great-britain](http://www.gov.uk/guidance/construction-products-regulation-in-great-britain)

**Telephone: 01707 282880**

For further information, please contact the CCRP team at [Partner.meuk.mee.com](mailto:Partner.meuk.mee.com)



@meuk\_les  
@green\_gateway



Mitsubishi Electric Living  
Environmental Systems UK



Mitsubishi Electric  
Cooling and Heating UK



mitsubishielectricuk\_les



mitsubishielectric2



thehub.mitsubishielectric.co.uk

**UNITED KINGDOM Mitsubishi Electric Europe Living Environmental Systems Division**

Travellers Lane, Hatfield, Hertfordshire, AL10 8XB, England. Telephone: 01707 282880 Fax: 01707 278881

**IRELAND Mitsubishi Electric Europe**

Westgate Business Park, Ballymount, Dublin 24, Ireland. Telephone: (01) 419 8800 Fax: (01) 419 8890 International code: (003531)

Country of origin: United Kingdom - Japan - Thailand - Malaysia. ©Mitsubishi Electric Europe 2022. Mitsubishi and Mitsubishi Electric are trademarks of Mitsubishi Electric Europe B.V. The company reserves the right to make any variation in technical specification to the equipment described, or to withdraw or replace products without prior notification or public announcement. Mitsubishi Electric is constantly developing and improving its products. All descriptions, illustrations, drawings and specifications in this publication present only general particulars and shall not form part of any contract. All goods are supplied subject to the Company's General Conditions of Sale, a copy of which is available on request. Third-party product and brand names may be trademarks or registered trademarks of their respective owners.

Effective as of April 2024



[www.greengateway.mitsubishielectric.co.uk](http://www.greengateway.mitsubishielectric.co.uk)

Mitsubishi Electric UK's commitment  
to the environment